



THE UNIVERSITY OF CHICAGO

# CHAS

THE CENTER FOR HEALTH ADMINISTRATION STUDIES

## ***Doctoral Research Stipend Program***

### **About**

The purpose of this program is to support health policy and services research by offering a stipend to doctoral students who play an active role in the research of CHAS fellows, CHAS affiliates, and other CHAS-funded faculty members. Annual awards of \$3000 will be distributed in quarterly increments of \$1000.

### **Requirements**

In addition to their duties as a research assistant, CHAS requires awardees to follow some additional guidelines:

1. Doctoral students must be actively enrolled, and in good academic standing with University and are expected to be in residence for the entire period of their stipend support.
2. Awardees must attend weekly Davis Lectures (Tuesdays, 12:00-1:30pm) and other relevant CHAS events.

### **Apply**

Please submit a two-page, double-spaced proposal describing the following:

- the research question;
- specific tasks you will be engaged on;
- what products will result from your work.

**Submit your application  
by June 9, 2017 to  
[chas@ssa.uchicago.edu](mailto:chas@ssa.uchicago.edu)**



*CHAS research stipends are not intended to support dissertation research nor other original research that may be supervised by a CHAS faculty member or CHAS-funded faculty member.*

*For additional funding opportunities, please see our website: [CHAS.UCHICAGO.EDU/AWARDS](http://CHAS.UCHICAGO.EDU/AWARDS)*



**Jeanne Marsh, PhD,  
MSW (CHAS Director)**



**Colleen Grogan, PhD  
(CHAS Co-Director)**



**Deborah Gorman-Smith,  
PhD, MSW (CHAS  
Committee)**



**Curtis McMillen, PhD,  
MSW (CHAS Committee)**



**Harold Pollack, PhD  
(CHAS Committee)**

# ***CHAS Fellows & Affiliates***

---



**Daniel Adelman, PhD,  
MSc (Booth)**



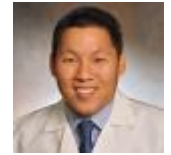
**Alida Bouris, PhD,  
MPhil, MSW (SSA)**



**Kathleen Cagney,  
PhD (Sociology)**



**Brian Callender, MD,  
MA (Medicine)**



**Kao-Ping Chua, PhD,  
MD (Medicine)**



**Marshall Chin, MD,  
MPH (Medicine)**



**Rena Conti, PhD  
(Public Health Sciences)**



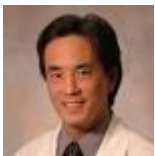
**Matthew Epperson,  
PhD, MSW (SSA)**



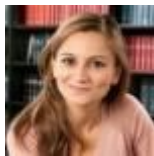
**Robert Gibbons, PhD  
(Public Health Sciences)**



**Donald Hedeker, PhD  
(Public Health Sciences)**



**Elbert Huang, MD,  
MPH (Medicine)**



**Leyla Ismayilova,  
PhD, MSW (SSA)**



**Waldo E. Johnson,  
Jr., PhD, MSW (SSA)**



**Tamara Konetzka, PhD  
(Public Health Sciences)**



**Diane Lauderdale, PhD  
(Public Health Sciences)**



**Anup Malani, PhD, JD  
(Law)**



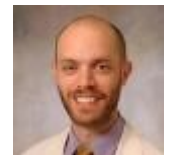
**Doriane Miller, MD  
(Medicine)**



**Olufunmilayo Olopade,  
MD (Medicine)**



**Sola Olopade, MD, MPH  
(Medicine)**



**John Schneider, PhD,  
MD (Public Health  
Sciences)**



**Fabrice Smieliauskas,  
PhD (Public Health  
Sciences)**



**Dexter Voisin, PhD,  
MSW (SSA)**



**Marci Ybarra, PhD, MSW  
(SSA)**



**Alan Zarychta, PhD  
(SSA)**